



Universal Slow Control (current status)

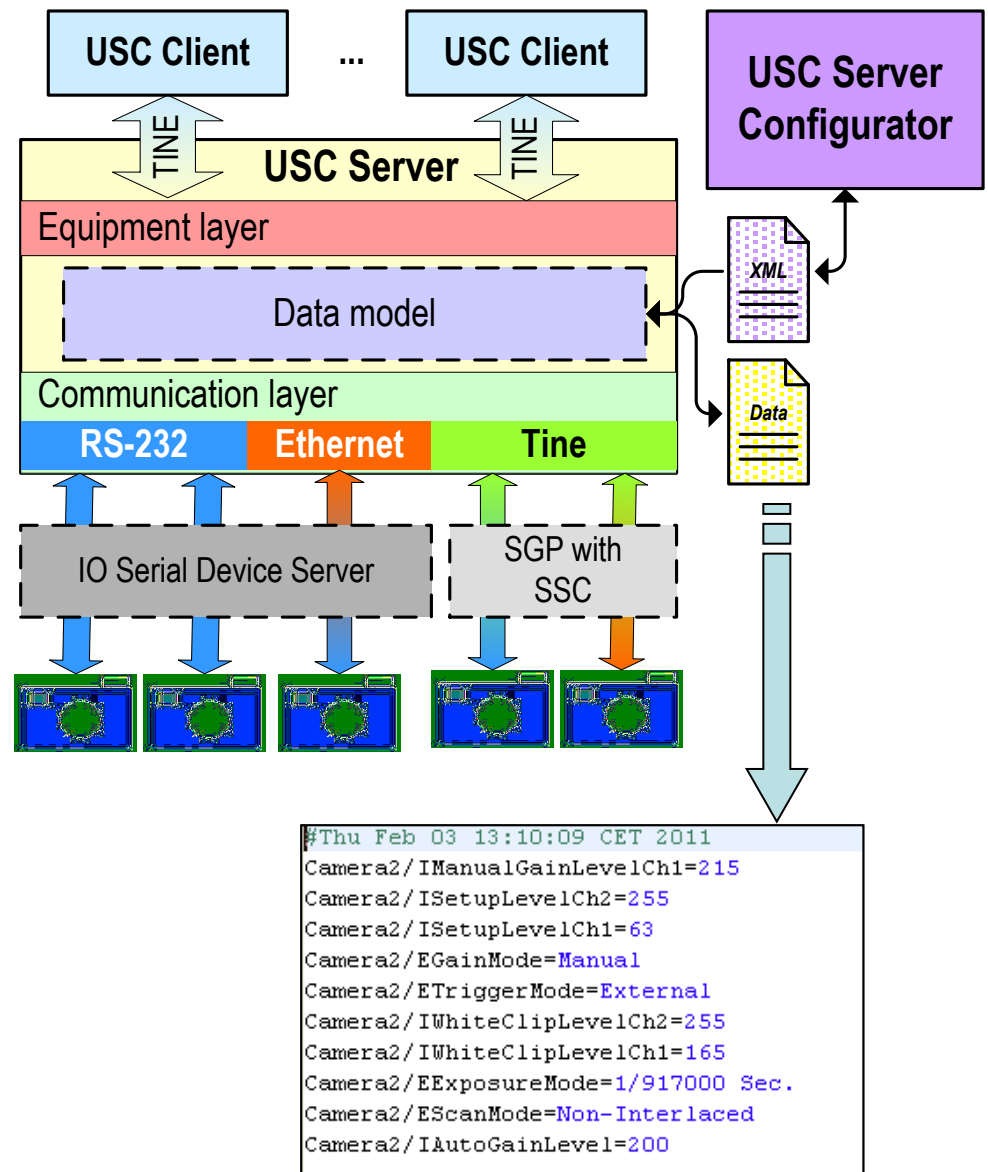
David Melkumyan
DV Group
DESY Zeuthen

February 2011



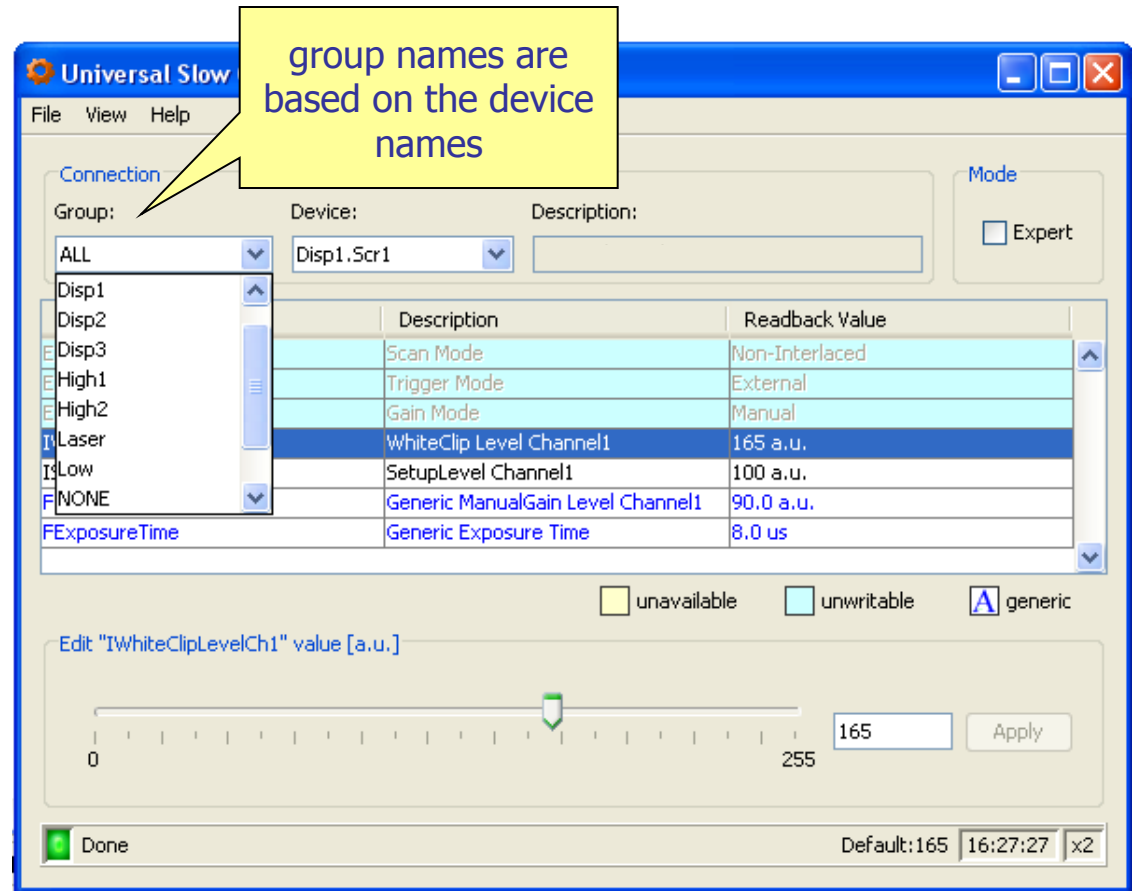
USC TINE Server

- equipment layer handles requests from the client;
- data model provides a standard set of data model elements used to control devices;
- communication layer allows server to read/write data from/to device using one of the standard communication protocols ;
- server XML configuration file is used to configure the server
- server Properties data file describes the state of the property values;
- using “SSC Finder” automatically obtains available SSC Servers;



USC Client

- invoked directly by user;
- uses TINE transport protocol to communicate with USC Servers;
- using “USC Finder” automatically obtains available USC Servers;



two (optional) Java VM arguments for USC Client:

- `-Duscserver.address.filter=PITZ/SLOWCON*/*`
- `-Duscserver.address.subsys=VIDEO`

// (default is "*")

// (default is "ALL")

USC Server Configurator

- design goal: provide a simple, clean, consistent view of the data model elements
- verifies validity of data element values just in time of typing
- allows to use predefined templates

The screenshot shows the USC Server Configurator interface. On the left is a tree view of the data model, and on the right is a configuration window for a device. Annotations highlight specific features and errors:

- invalid device:** Points to a device entry in the list with a red camera icon.
- invalid device:** Points to a device entry in the list with a green camera icon.
- dynamic address:** Points to a device entry in the list with a green camera icon.
- disabled device:** Points to a device entry in the list with a grey camera icon.
- device disabling:** Points to the "Disable (USC-Server will ignore this device)" checkbox in the configuration window.
- read-only flag:** Points to the "Read-only" dropdown menu in the configuration window.

The configuration window shows the following details for the selected device:

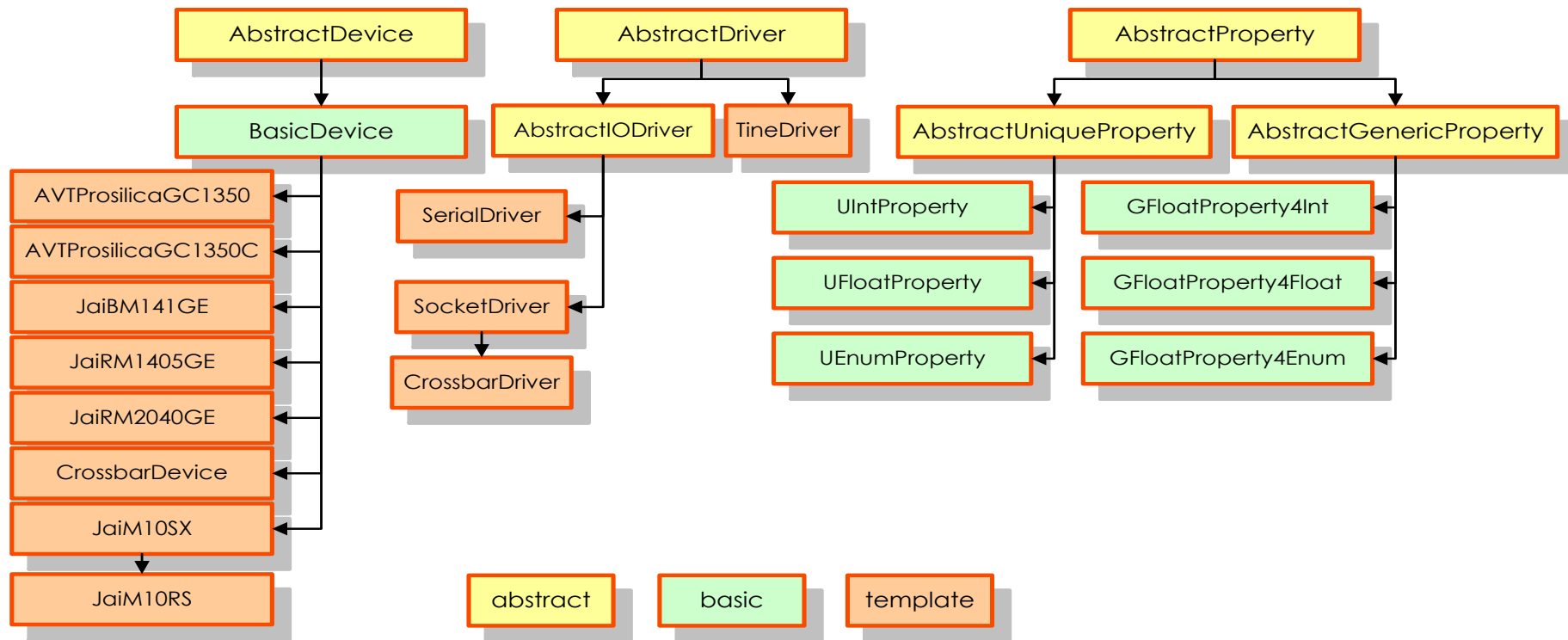
- Name: New_Device
- Description:
- Driver: SocketDriver
- Host:
- Port:
- Read cmd: SVD
- Properties table:

Name	Type	Generic
EScanMode	Enumeration	<input type="checkbox"/>
ETriggerMode	Enumeration	<input type="checkbox"/>
EGainMode	Enumeration	<input type="checkbox"/>

Additional configuration fields for EGainMode:

- Name: EGainMode
- Read-only: false
- Description: Gain Mode
- Unit:
- Visible (user): true
- Setable (user): false
- Write expr:
- Read cmd:
- Data index: 34
- Data size: 1

Data Model - Overview





thank you

David Melkumyan
DV Group
DESY Zeuthen

February 2011

